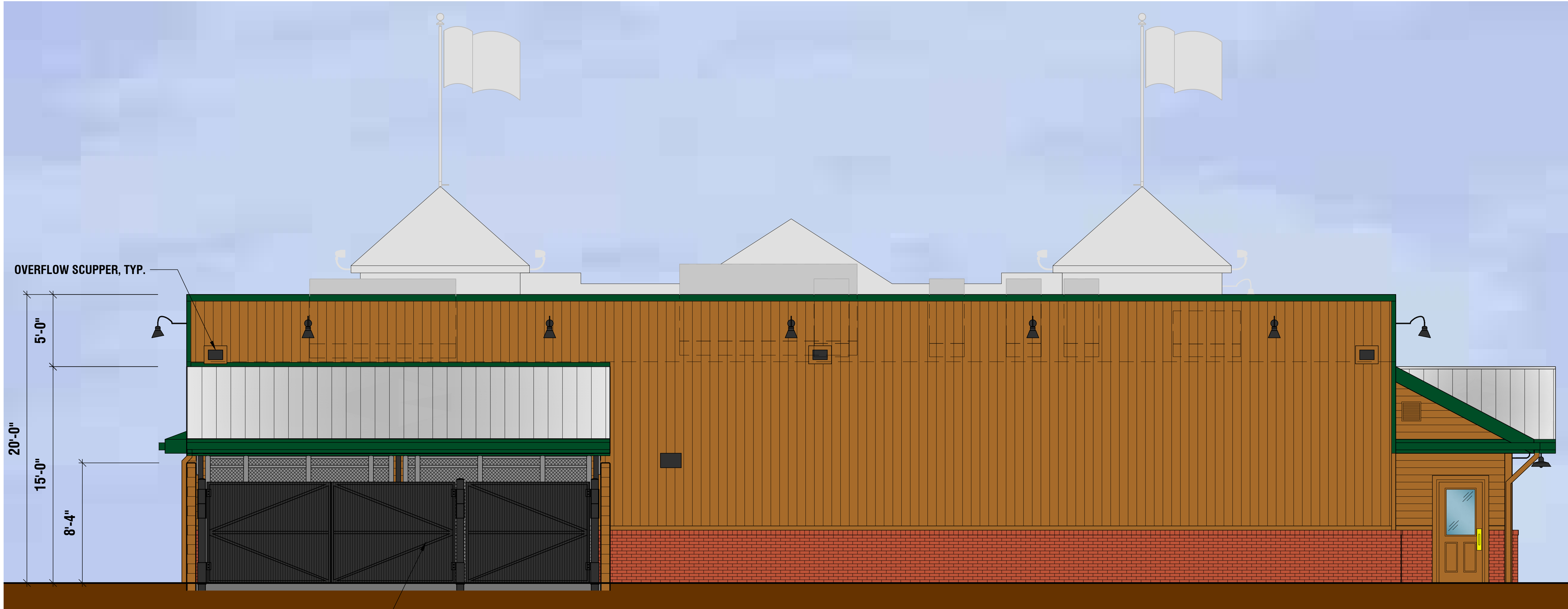




FRONT ELEVATION (WEST)



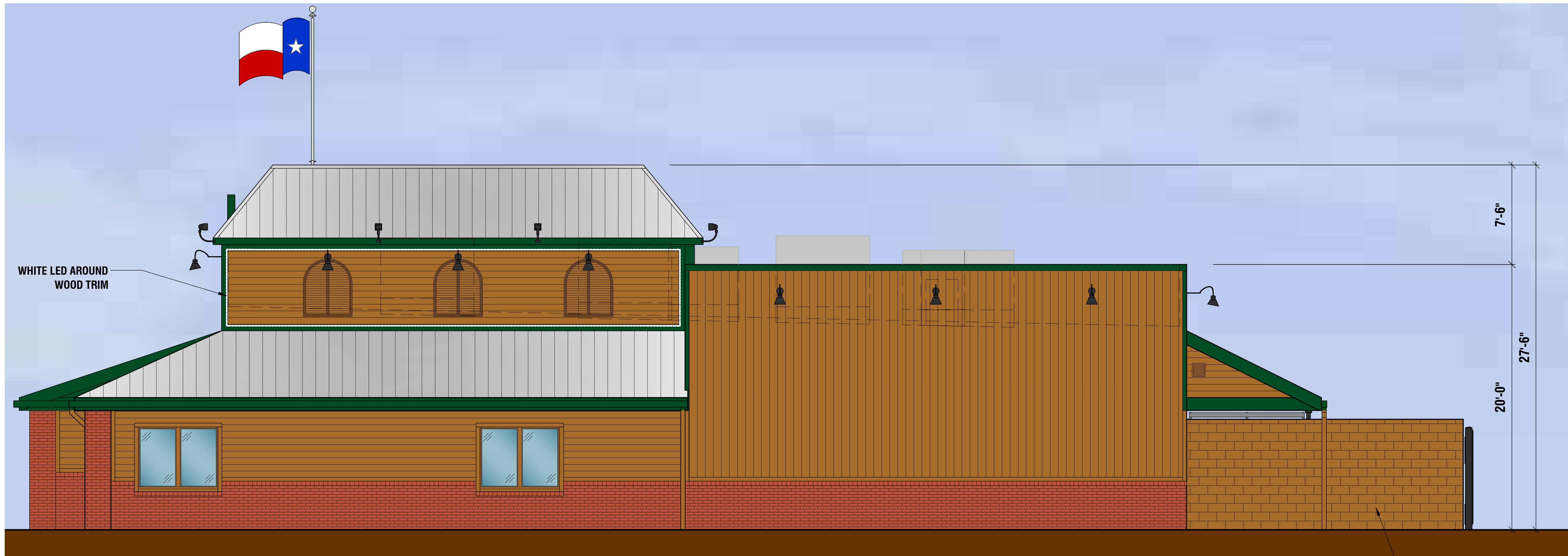
REAR ELEVATION (EAST)

EXTERIOR FINISH SCHEDULE	
BUILDING ITEMS	DESCRIPTION
WOOD SIDING, TRIM, & WOOD SHUTTERS	PRE-STAINED CEDAR HENRY POOR LUMBER CEDARTONE TWP #1501 STAIN FORMULA
FRONT ENTRANCE DOORS	METAL DOORS (FAUX WOOD) CECO DOOR "MADERA" (CS-5)
TRIM, METAL FLASHING AND GUTTERS	PAINT #1 SHERWIN WILLIAMS PAINTS 2 COATS GREEN ENAMEL OIL OR ACRYLIC BASE.
ENTRY DOOR FRAME & DOWNSPOUTS	PAINT #2: SHERWIN WILLIAMS PAINTS #2195 ROADSIDE, ACRYLIC OR ENAMEL GLOSS BASE (DTM) FINISH COLOR TO MATCH PRE-STAINED CEDAR
SPLIT FACE CMU	PAINT TO MATCH CEDAR SIDING
METAL DOORS AND FRAMES	PAINT #3: SHERWIN WILLIAMS PAINTS ENAMEL GLOSS BLACK
BRICK VENEER	CLAYMEX "OLD DENVER"
BRICK VENEER (ALTERNATE)	GENERAL SHALE PHOENIX C652
METAL ROOF	METAL SALES - "5V-CRIMP" COLOR: GALVALUME
DUMPSTER GATES & BOLLARDS	PAINT #3: SHERWIN WILLIAMS PAINTS ENAMEL GLOSS BLACK

DISCLAIMER NOTE:
THE COLORS DEPICTED ON THESE ELEVATIONS ARE FOR GRAPHIC REPRESENTATION PURPOSES ONLY. PLEASE REFER TO MATERIAL BOARD FOR ACTUAL SAMPLE OF COLORS AND TEXTURES

EXTERIOR FINISH SCHEDULE	
BUILDING ITEMS	DESCRIPTION
WOOD SIDING, TRIM, & WOOD SHUTTERS	PRE-STAINED CEDAR HENRY POOR LUMBER CEDARTONE TWP #1501 STAIN FORMULA
FRONT ENTRANCE DOORS	METAL DOORS (FAUX WOOD) CECO DOOR "MADERA" (CS-5)
TRIM, METAL FLASHING AND GUTTERS	PAINT #1 SHERWIN WILLIAMS PAINTS 2 COATS GREEN ENAMEL OIL OR ACRYLIC BASE.
ENTRY DOOR FRAME & DOWNSPOUTS	PAINT #2: SHERWIN WILLIAMS PAINTS #2195 ROADSIDE, ACRYLIC OR ENAMEL, GLOSS BASE (DTM) FINISH COLOR TO MATCH PRE-STAINED CEDAR
SPLIT FACE CMU	PAINT TO MATCH CEDAR SIDING
METAL DOORS AND FRAMES	PAINT #3: SHERWIN WILLIAMS PAINTS ENAMEL GLOSS BLACK
BRICK VENEER	CLAYMEX "OLD DENVER"
BRICK VENEER (ALTERNATE)	GENERAL SHALE PHOENIX C652
METAL ROOF	METAL SALES - "5V-CRIMP" COLOR: GALVALUME
DUMPSTER GATES & BOLLARDS	PAINT #3: SHERWIN WILLIAMS PAINTS ENAMEL GLOSS BLACK

DISCLAIMER NOTE:
THE COLORS DEPICTED ON THESE ELEVATIONS ARE FOR GRAPHIC REPRESENTATION PURPOSES ONLY. PLEASE REFER TO MATERIAL BOARD FOR ACTUAL SAMPLE OF COLORS AND TEXTURES



RIGHT ELEVATION (SOUTH)



LEFT ELEVATION (NORTH)