

**FRONT ELEVATION (WEST)**



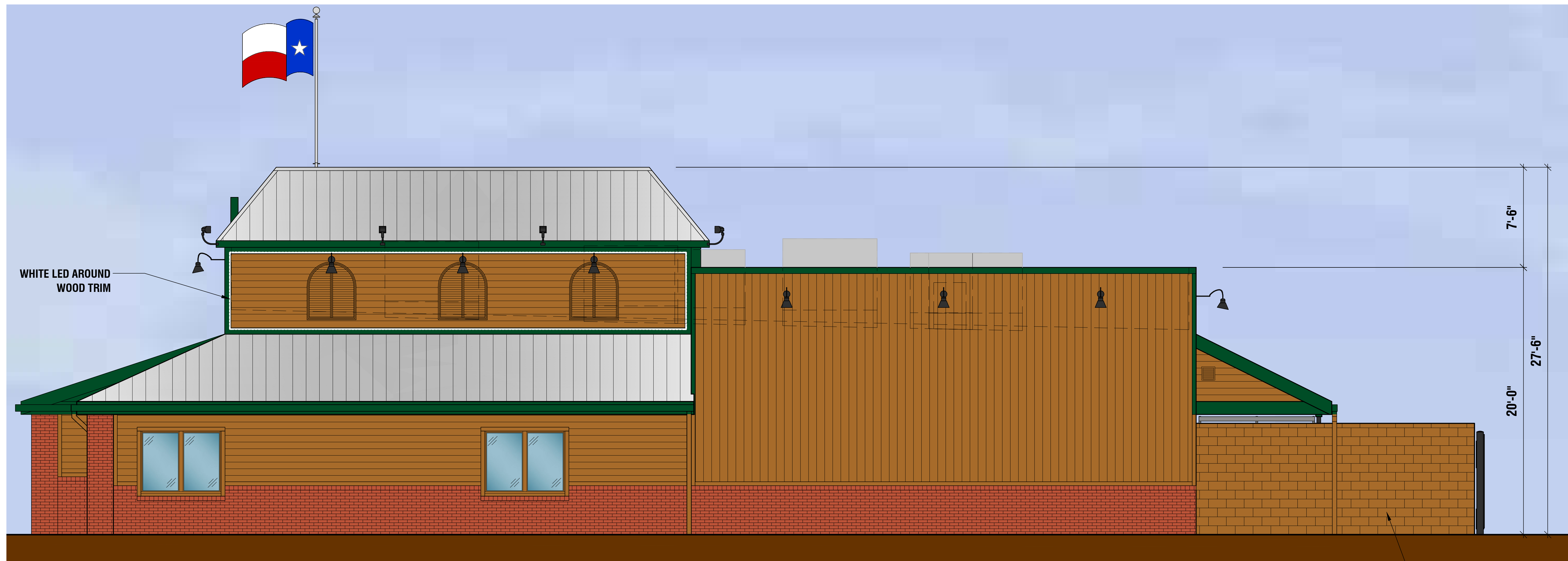
**EXTERIOR FINISH SCHEDULE**

BUILDING ITEMS	DESCRIPTION
WOOD SIDING, TRIM, & WOOD SHUTTERS	PRE-STAINED CEDAR HENRY POOR LUMBER CEDARTONE TWP #1501 STAIN FORMULA
FRONT ENTRANCE DOORS	METAL DOORS (FAUX WOOD) CECO DOOR "MADERA" (CS-5)
TRIM, METAL FLASHING AND GUTTERS	PAINT #1 SHERWIN WILLIAMS PAINTS 2 COATS GREEN ENAMEL OIL OR ACRYLIC BASE.
ENTRY DOOR FRAME & DOWNSPOUTS	PAINT #2: SHERWIN WILLIAMS PAINTS #2195 ROADSIDE, ACRYLIC OR ENAMEL, GLOSS BASE (DTM) FINISH COLOR TO MATCH PRE-STAINED CEDAR
SPLIT FACE CMU	PAINT TO MATCH CEDAR SIDING
METAL DOORS AND FRAMES	PAINT #3: SHERWIN WILLIAMS PAINTS ENAMEL GLOSS BLACK
BRICK VENEER	CLAYMEX "OLD DENVER"
BRICK VENEER (ALTERNATE)	GENERAL SHALE PHOENIX C652
METAL ROOF	METAL SALES - "5V-CRIMP" COLOR: GALVALUME
DUMPSTER GATES & BOLLARDS	PAINT #3: SHERWIN WILLIAMS PAINTS ENAMEL GLOSS BLACK

DISCLAIMER NOTE:  
THE COLORS DEPICTED ON THESE ELEVATIONS ARE FOR GRAPHIC REPRESENTATION PURPOSES ONLY. PLEASE REFER TO MATERIAL BOARD FOR ACTUAL SAMPLE OF COLORS AND TEXTURES

**REAR ELEVATION (EAST)**





**RIGHT ELEVATION (SOUTH)**



**LEFT ELEVATION (NORTH)**

EXTERIOR FINISH SCHEDULE	
BUILDING ITEMS	DESCRIPTION
WOOD SIDING, TRIM, & WOOD SHUTTERS	PRE-STAINED CEDAR HENRY POOR LUMBER CEDARTONE TWP #1501 STAIN FORMULA
FRONT ENTRANCE DOORS	METAL DOORS (FAUX WOOD) CECO DOOR "MADEIRA" (CS-9)
TRIM, METAL FLASHING AND GUTTERS	PAINT #1 SHERWIN WILLIAMS PAINTS 2 COATS GREEN ENAMEL OIL OR ACRYLIC BASE.
ENTRY DOOR FRAME & DOWNSPOUTS	PAINT #2: SHERWIN WILLIAMS PAINTS #2195 ROADSIDE, ACRYLIC OR ENAMEL, GLOSS BASE (DTM) FINISH COLOR TO MATCH PRE-STAINED CEDAR
SPLIT FACE CMU	PAINT TO MATCH CEDAR SIDING
METAL DOORS AND FRAMES	PAINT #3: SHERWIN WILLIAMS PAINTS ENAMEL GLOSS BLACK
BRICK VENEER	CLAYMEX "OLD DENVER"
BRICK VENEER (ALTERNATE)	GENERAL SHALE PHOENIX C652
METAL ROOF	METAL SALES - "SV-CRIMP" COLOR: GALVALUME
DUMPSTER GATES & BOLLARDS	PAINT #3: SHERWIN WILLIAMS PAINTS ENAMEL GLOSS BLACK
DISCLAIMER NOTE: THE COLORS DEPICTED ON THESE ELEVATIONS ARE FOR GRAPHIC REPRESENTATION PURPOSES ONLY. PLEASE REFER TO MATERIAL BOARD FOR ACTUAL SAMPLE OF COLORS AND TEXTURES	